



# PLANMAIN QUALITY CONSULTANTS ( INDIA ) PVT. LTD.

\*SOFTWARE

\*CONSULTANCY

\*TRAINING

Atur House, 2<sup>nd</sup> Floor, 87, Dr. Annie Besant Road, Worli Naka, Mumbai – 400 018

Tel. : +91 22 4029 4100

## ShipMaster PMS

### Planned Maintenance System

Safe, efficient and cost effective fleet management while keeping in compliance with classification society and other regulatory authorities requires taking control of vessel equipment maintenance and inventory with support from powerful information systems - specialized to suit industry requirements, standardized in functionality and at the same time designed to integrate other company information systems

**ShipMaster PMS & ShipMaster ePMS** are new generation maintenance management systems developed to meet the stringent requirements of maritime industry.

### Simple, flexible and efficient solution

The **ShipMaster PMS** is a comprehensive maintenance management and inventory control system, which organizes all information pertaining to vessel equipment and maintenance in the fleet. This information can then be used for reference and to generate maintenance schedules, produce reports regarding maintenance history, survey schedules and assist with all other activities of shipboard maintenance and inventory control.

The screenshot displays the ShipMaster PMS software interface. The main window shows a list of equipment records with columns for EquipNo, Name, Department, Type, Location, SerialNo, Maker, Inst Year, Condition, and Cate. The records include various engine components, emergency systems, and safety equipment. The interface also features a navigation pane on the left, a search bar at the top, and a status bar at the bottom.

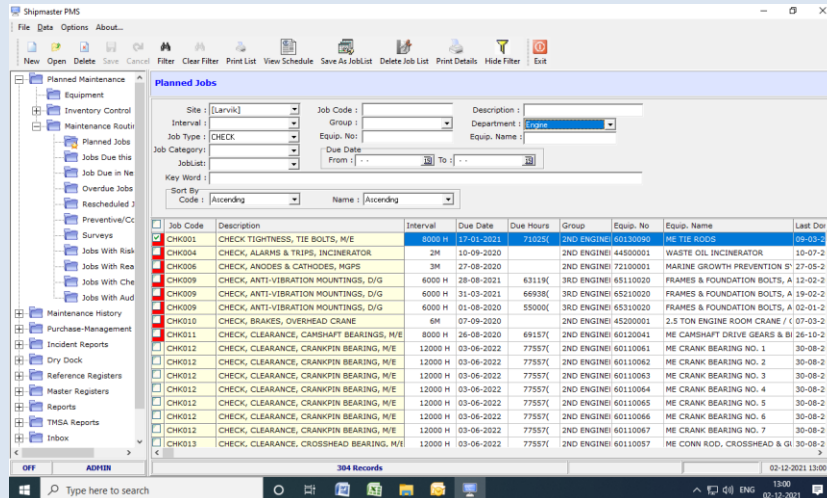
EquipNo	Name	Department	Type	Location	SerialNo	Maker	Inst Year	Condition	Cate
26800001	PUMPELS DAMPERS	Deck					2006	SATISFACTORY	Critic
40300000	--- STEERING GEAR, ELECTRO HYDRA	Engine	DF-125			MHI NAGASAKI	2006	SATISFACTORY	Critic
40390001	CONTROL CABINET, STEERING GEAR	Engine	CA-3W			JAPAN RADIO	2006	SATISFACTORY	Critic
41400025	ECCDIS NO.1	Engine	HBK-4001-2		MP121008	Kelvin Hughes		SATISFACTORY	Critic
41400026	ECCDIS NO.2	Engine	MANTADIGITAL		MP121004	Kelvin Hughes		SATISFACTORY	Critic
60190025	MANOEUVRING DEVICE	Engine	7SS0MC			mitsui - man	2006	SATISFACTORY	Critic
66500000	--- MARINE EMERGENCY GENERATOR	Engine				STX Engine Co	2006	SATISFACTORY	Critic
66530001	EMERGENCY DIESEL ENGINE	Engine	6CTA8.3 D (M)		21630710	CUMMINS MAR	2006	SATISFACTORY	Critic
66590001	EMERGENCY ALTERNATOR	Electrical	UC, H274H1		0190287/02	NEWAGE INTE	2006	SATISFACTORY	Critic
66590001	EMERGENCY GEN-SET - CONTROL PAN	Electrical	HD -733		5022373	mitsubishi		SATISFACTORY	Critic
66590011	EMERGENCY GEN-SET - BATTERY CHA	Electrical	TYPE DF		62319	HANSHIN ELEC	2006	SATISFACTORY	Critic
73130010	EMERGENCY AIR COMPRESSOR	Engine	MGR5AP3			MATSUBARA II	2006	SATISFACTORY	Critic
73160006	AUXILIARY AIR RESERVOIR	Engine				OHAMA MANUF	2006	SATISFACTORY	Critic
81190011	FIRE DETECTION & ALARM SYSTEM	Safety Equipment &	FACS12B-2BL			Nahmi Bosei K	2006	SATISFACTORY	Critic
81220011	DO SERVICE TANK QUICK CLOSING V	Safety Equipment &						SATISFACTORY	Critic
81220012	DO STORAGE TANK QUICK CLOSING V	Safety Equipment &						SATISFACTORY	Critic

### Easy information Search

Quick access to correct information is critical for efficient operation. **ShipMaster PMS** facilitates filtering of data on a number of criteria for one vessel or several

vessels across the fleet. Each filtered listing can be easily exported to Microsoft Word format.

### Salient features :



### Scheduled and Preventive tasks :

The maintenance tasks can be easily organized into routine repeating tasks or one time preventive tasks. The overdue tasks are visually marked. This makes work and resource scheduling very easy

### Risk Indication :

**ShipMaster PMS** allows the user to designate any work with possible Risk involved and steps taken to reduce the risk. This gives a very good indication of possible risk in a specified period

### Machinery Reliability Indication :

The system dynamically indicates **MTBR** - the mean time between reports- a very positive indicator of machinery performance and condition. The 'trouble spots' can be easily identified

### Failure Analysis :

The system allows user to record various equipment failure incidents, possible reasons for such failure and suggestions for improvement

### Vessel Survey Status :

The system will indicate the current status of class related tasks

We are committed to work with our customers to implement and follow up to achieve optimal utilization of the **ShipMaster PMS** in their organization.

**Planmain** has a team, of highly qualified consultants with vast experience in building and implementing PMS, to assist you throughout the implementation process.